



SUCCESS FOR NEW HARVESTERS

4

Two new
heads

∞
1

Optimize
with MaxiFleet

2

Irving
helps out

Tree properties and appearances vary greatly throughout the world. This is a basic assumption in modern harvesting head development, which shows a clear trend for more specialized heads with more customization options.

835





ULF NILSSON

VP CUSTOMER SERVICE BUSINESS,
KOMATSU FOREST

Customer relations most important!

Most people have probably noticed that in just a few years we've renewed our entire machine lineup. First new forwarders in 2013 and now new harvesters in 2015. But we don't want to simply deliver the best machines. Just as importantly, we'd like to deepen our relationship with you, our customers, so that we can succeed together. The basis of our relation is facts about your typical day and how your machines perform. Increasingly more customers want to know the TCO (Total Cost of Ownership) of a machine and what affects business income and expenses. Naturally, high productivity and low operating costs are the aim of all forest machine owners.

One prerequisite for developing a business is knowledge. It's essential that both Komatsu Forest and machine owners are able to identify training needs so as to enable improvement. Learning about the technical aspects of a machine is important, but methodology training is equally important. We use a long-term approach to ensure fact-based and systematic follow-ups of each machine's performance. Our vision is to avoid all unplanned downtime for a

machine. The basic idea is to replace parts before they fail and to conduct preventative maintenance before the machine breaks down. Follow-ups also create the necessary conditions for keeping track of a machine's total cost throughout its service life. Well-structured close collaboration gives you the opportunity to influence everything from machine development to the measures conducted by service mechanics. It allows you to participate in the formulation of our aftermarket offering and to jointly identify the aspects that contribute to our mutual success. In everything we do, we want you to have peace of mind as well as your say.

Our new machines are currently attracting a great deal of attention from contractors throughout the world. We want to build close and lasting customer relations with you, centered on your machines. We know that this is a prerequisite for increased profitability in our industry.

"A Komatsu should never stop – unless planned"

Happy reading!

CONTENTS



Two new heads	4
The bigger the better	6
New bar and chain lubrication system.....	8
A many-sided family business.....	9
New crane and computer	10
Cab changed his plans	11
New harvesters take center stage.....	12
Promising start in Norway	14
He knows what he's getting.....	16
MaxiFleet with satellite.....	18
Making follow-ups effective	19
He's a step ahead	20
Irving helps contractors.....	22
High ratings from readers.....	24
Technical news	26
No two trees the same.....	28
News.....	30

JUST FOREST INTERNATIONAL MAGAZINE

Publisher: Roland Lundqvist, roland.lundqvist@komatsuforest.com
Editor: Gunnar Andersson, gunnar.andersson@tr.se
Address: Just Forest, Komatsu Forest AB, Box 7124, SE-907 04 Umeå, Sweden
Contact: Telephone +46 90 70 93 00
Internet: www.komatsuforest.com

Production: TR, Skellefteå
Printing: Ågrenshuset, Bjästa, Sweden
Paper: Multi art matt 115 g
Circulation: 40,000
Languages: Swedish, Finnish, English, German, French, Portuguese, Spanish, and Russian.
The content may be quoted if the source is cited.

KOMATSU

Corporate Headquarter
Umeå, Sweden
Phone : +46 90 70 93 00
E-mail: info@komatsuforest.com
Postal adress: Komatsu Forest
Box 7124, 907 04 SE-Umeå, Sweden

THE HEAD THAT ALWAYS DELIVERS

Large, strong, and durable. The new **Komatsu C283** is quite simply reliable and productive with a feed roller opening of a full 31½" (800 mm).

THE KOMATSU C283 is a new head based on a well-proven design with a sturdy chassis and components developed to handle large and heavy trees. The head can be used as both a harvesting head and a

processor for pre-felled trees. Suitable carriers for the Komatsu C283 include forestry excavators from 27 metric tons and upward and XT model tracked forest machines.

High productivity, low operating costs,



and minimal downtime have been key objectives in the development of the Komatsu C283. With three years of important customer experience from its predecessor the Komatsu 398 on hand, the new Komatsu

FOR THE BIGGEST TREES

The new **Komatsu S172** head is the largest in the range for wheeled harvesters. This is the largest two-wheel fed head in the S series and is well-proven and designed for heavy, crooked trees.

THE NEW KOMATSU S172 is a large, strong, and reliable head with well-positioned guards and hoods to protect components and hoses from wear and damage. The head is also simple to maintain with easily accessible service points. The head is flexible, as seen in the broad range of optional equipment that includes a two-speed feed motor, two different saw units, three different feed rollers, and alternative measuring systems.

The feed system on the Komatsu S172 is designed to cope with the demands of heavy, crooked trees. The feed force is 4.5 tonf (40.2 kN) and with the two-speed motor you have the option of variable feed speed. To put it simply, this means that the feed prioritizes speed when the going is easy and traction when the going gets tough. The feed system also features a choice of three optional feed rollers. Two are optimized for handling coniferous trees while the third model is designed for debarking broad-leaf trees.

The new head has four moving



C283 is designed to deliver productivity and profitability hour after hour, day after day, all year round. This means high uptime and simple service.

The Komatsu C283 has all the components necessary to make it a head for truly demanding conditions. A well-protected saw unit and durable delimbing knives are but two examples. The top saw, for instance, features a protective hood made from extra strong material. The saw unit has improved chain tensioning and stop lugs.

ANOTHER NEW FEATURE that makes the Komatsu C283 a head that always delivers

productively is feed rollers with wide rims, which means more studs to grip the stem. The head even has well-protected hose routing, such as for the feed roller hoses. The new hose routing also simplifies service.

IN ORDER TO REDUCE maintenance downtime, the Komatsu C283 is easy to service. Topping up the oil, for example, is quick and easy as the saw chain oil can be refilled from the outside of the saw box. The head also has a modified filler cap to reduce the risk of debris entering the tank.

The Komatsu C283 is designed for use with the MaxiXplorer Head control system.

Highlights **KOMATSU C283**

SUCCESSOR to the Komatsu 398

FEED ROLLER OPENING a full 31½" (800 mm)

STURDY FRAME CONSTRUCTION increases reliability

HIGH FEED FORCE ensures an effective feed and good stem holding

WELL-PROVEN TECHNOLOGY ensures high uptime

HARD-WEARING DELIMBING KNIVES designed for processing

ACCURATE AND RELIABLE length measurement

WELL-PROTECTED saw units

NEW REINFORCED plates

EASY ACCESS service points

NEW, SMART chain tensioning

WELL-PROTECTED hose routing

delimbing knives, of which three are hydraulically controlled. The fourth vertical delimbing knife is self-retracting and has an integrated sensor for controlling Flex Friction Control, a system that senses the position of the stem in relation to the head frame. The sensor controls the other delimbing knives' contact pressure against the stem and ensures the lowest possible friction between the stem and the head. The Komatsu S172 also has a fixed delimbing knife precisely above the saw for delimbing trees with low-hanging limbs when contact is made.

The Komatsu S172 can even be equipped for processing by choosing the hydraulically controlled vertical knife, the electrically controlled measuring wheel, and knives specially designed for processing.

The head can be equipped with two different saw units with either manual or automatic chain tensioning and with two saw motor alternatives, 1.16 cu in or 1.83 cu in (19 cc/30 cc).



Highlights **KOMATSU S172**

TWO-WHEEL FEED maximizes productivity with crooked trees.

DELIMBING KNIFE FOR REMOVING low-hanging limbs before felling.

FLEX FRICTION CONTROL. Knife pressure and lifting force controlled by a sensor for the lowest possible friction.

CAST STEEL FEED ROLLER ARMS for maximum service life.

MANUAL OR AUTOMATIC chain tensioning.

THREE DIFFERENT FEED ROLLERS for maximum adaptability and functionality.

OPTIONAL 4-POINT MEASURING for increased measurement accuracy.

FOREST MACHINE CONTRACTOR PETER BYSTEDT:

“THE BIGGER THE

Forest machine contractor Peter Bystedt believes that large harvesters are profitable harvesters. That’s why he bought a new Komatsu 951.

“Experience has taught me that they’re better in terms of both results and work environment,” he says.

PETER BYSTEDT founded the company Härnö Skog in 2002. Today, he runs the business together with his wife Elisabeth. The company works with final logging and thinning, as well as ground preparation, and is based in Härnösand on the east coast of northern Sweden.

At the time of writing, Peter has just taken delivery of a new Komatsu 951. It’s the largest harvester on the market.

“I’ve been really pleased with my 941 models, so when it was time to invest in a new harvester for final logging I didn’t hesitate for a second,” Peter explains.

His experience with the 941 harvesters has shown that really large harvesters are profitable for final logging.

“I’ve realized that it’s more profitable for us to have a harvester with slightly excessive capacity. It enables us to remain competitive even with the relatively small average stem sizes that we work with,” he continues.



Härnö Skog uses its Komatsu 951 for final logging with extremely varied stem sizes.

Machine lineup HÄRNÖ SKOG

FORWARDERS:

Komatsu 895, Komatsu 860.4, and Valmet 860.

HARVESTERS:

Komatsu 911.5, Komatsu 951, Valmet 941.1.

THE FINAL LOGGING

that Härnö Skog conducts varies greatly in terms of stem diameter, both within individual assignments and between them.

“Our average stem size over the year is 0.30 m³ of solid volume timber, but it can vary as much as from 0.18 to 0.70 m³ of solid volume timber. The losses we make on the smaller trees with a large harvester are more than balanced up by the larger trees,” Peter explains.

Härnö Skog has a total of 17 employees. The majority are forest machine operators split into three teams, one for final logging,

one for thinning, and one for both tasks.

“When it comes to final logging, my philosophy is the bigger the harvester the better the result. And, more importantly, the better the work environment for the operators,” he says.

THE DEVELOPMENT of the Komatsu 951 was fully focused on the operator.

This means, for instance, an improved cab environment and better operator comfort. One example is the new front windshield design.

“The cab work environment was



BETTER.”

important when I decided on a machine. Ergonomics, comfort, and good visibility – upward, downward, and to the rear – are decisive to being able to perform well in a harvester,” says Peter.

ANOTHER EXAMPLE of the clear operator focus is the stability, aided by Komatsu Comfort Bogie and the AutoLev cab suspension system.

Peter says that young operators today prioritize comfort.

The Komatsu 951 has the industry’s first remote-controlled keyless system, which can control the heating and the main circuit-breaker/lighting from a distance. The keyless system is coded by operator so that when the operator activates the main circuit-breaker they are automatically logged in to MaxiXplorer with the appropriate operator profile.

The cab also has a media hub, MediaZone, that includes several connectors for both USB and AUX.

“Comfort at work is becoming increasingly important to attract young operators,” he says.

TO ENSURE THAT OPERATORS have the right conditions for effective production, the Komatsu 951 has a 3-pump hydraulic system that enables simultaneous use of the crane, the head functions, and the transmission. This means that there is always sufficient hydraulic power for the operator to perform several tasks at once. The operator can use several crane and head functions together with maximum hydraulic power, such as slew the crane, feed a log, and maneuver the machine.

“This is a great step forward that will most likely increase production, even if it maybe requires a little getting used to before the operators are able to use several functions at the same time,” says Peter.



Operator Conny Larsson, left, and Peter Bystedt are both pleased with the new harvester’s performance.

New bar and chain lubrication system

Forget oil mist on the windshield and unnecessary downtime to clean the cooler and refill the chain oil. **Eco-GLS** is a brand new lubrication system for saw units that reduces lubricant consumption, fuel consumption, downtime, and environmental impact.

ALL HEADS and saw units need some kind of chain and bar lubrication to reduce friction between metal surfaces, such as rails and side links, as well as to lubricate the bearings in the top roller. When lubricating the saw unit, oil is thrown from the chain when it turns at the top roller. This is because the chain is traveling at 130 feet per second (40m/s), creating a high centrifugal force. The result is that more oil than strictly necessary for lubrication must be applied to compensate for these losses. Another result of lubricating the saw unit is the oil mist that forms around the machine. Windshields need regular cleaning and there's a risk of reduced engine cooling efficiency as the oil mist sticks to the radiator fins and attracts dust and debris.

All of this is now a thing of the past. With the new Eco-GLS lubrication system, the oil is replaced with a grease that offers better adhesion to chain and bar components. This means that the grease is not thrown from the chain when it turns at the top roller. The result is considerably less unnecessary downtime as windshields and radiators no longer need cleaning. What's more, the lubricant doesn't need refilling as often, which also means more time behind the controls.

The heads that can be equipped with the Eco-GLS system are the C93 and the C144.



Clean windshields and less unnecessary downtime. The Eco-GLS lubrication system eliminates the problem of oil mist on the windshield as the grease remains on the bar and chain.



A many-sided family business

SAS Chaleix et fils (SAS Chaleix & Sons) is a French family business based in the Limousin region of central France.

THE COMPANY WORKS in several different sectors and pursues highly varied forestry operations with many types of client. French paper mills and sawmills and international trading companies, for example, represent about a quarter of all revenue. SAS Chaleix has harvesting rights to forest holdings with a harvesting period of two years and can rapidly respond to essentially all types of demand. Harvesting takes place in an area stretching from Limousin to the regions of Orléans and Bourges. Chestnut trees represent about half of the stands and as such comprise a large share of the harvested volume.

Yann Chaleix joined the family business in 1999 and manages all harvesting work. He's also responsible for forest acquisitions and machine transport, sometimes even driving transport trailers when necessary. For a company with just fourteen employees, a multi-talented manager is a real asset.

Franck Tindiller operates a Komatsu 855.1 and has extensive experience from several companies, as well as of several brands of forwarder. He was first in France to test the Komatsu Comfort Ride cab suspension system. Franck started using the new forwarder in September 2014 and after just a few months he's already a convert.

"I'll never use a machine without Komatsu Comfort Ride," he says.

He used to suffer from back problems, even requiring sick leave at times, but since he started operating a Komatsu 855.1 with Comfort Ride, he's had no problems with his back and particularly appreciates the nimble handling and smooth ride with no sudden jolts. After six months, he's spent more than 1,000 hours in this forwarder and is more than satisfied. He can easily traverse areas of logged trees, which are felled by a Komatsu 931 equipped with a Komatsu S132 head.



Franck Tindiller is a highly experienced forwarder operator.

Machine lineup
SAS Chaleix et fils

HARVESTER:
Komatsu 931 with S132 harvester head

FORWARDER:
Komatsu 855.1

Four trucks

One wheel loader and transport trailers

New computer in all machines

All machines are now equipped with a brand new computer. Faster, more reliable, and even easier to use.



THE NEW COMPUTER is the Maxi-PC X40 and it's specially designed for the needs of forest machines. This means, among other things, a quad-core processor for speed and an SSD hard drive for reliability. What's more, it's fanless.

The computer also supports the optional touchscreen, keyboard, and touchpad. The touchscreen has a borderless glass front to prevent debris from collecting on the screen. No separate mouse is needed as the hand controllers feature integrated mouse functionality.

The user interface is tailored to Komatsu machines with quick startup and shutdown times, integrated virus protection, and support for swiping/gestures.



NEW CRANE FOR 895

Optional combi crane now available for Komatsu 895, providing a reach of 33 feet (10 meters) while guaranteeing retained lifting force.

THE KOMATSU 895 has always had the market's strongest forwarder crane. The new combi crane extends its reach to 33 feet (10 meters) without compromising lifting force. Full force is quite simply available throughout the entire reach.

The longer reach is provided by a combi outer boom with dual telescopes. It also boasts protected, internally-routed hydraulic hosing and a crane tip fitted with ProTec as standard.

KOMATSU AUTOLEV ADVANCED

Smart cab suspension for new harvesters



ALL NEW HARVESTERS – the Komatsu 901, the Komatsu 911, the Komatsu 931, and the Komatsu 951 – can now be equipped with the unique cab suspension system option, Komatsu Autolev Advanced.

The technology is as simple as it is ingenious. The harvesters' Autolev Advanced cab suspension is hydraulic and all functions are controlled by MaxiXplorer. The result is effective softening of hard knocks.

In the far north of Europe, on the border between Finland and Sweden, the cities of Torneå and Haparanda have slowly merged. This is also true of the timber market, with the economy deciding in which direction the timber trucks take their loads.

Cab changed his plans



Mikko Majala in his Komatsu 911.

IN THE FAR NORTH, the border between Sweden and Finland follows the Torne river. The area is known as the Torne Valley and is marked by many cultural and linguistic similarities. Mikko Majala is a forest machine contractor in the area. His operations are based in the village of Liekka, six or seven miles from central Torneå on the Finnish side of the border. Mikko founded his business eight years ago and now has two harvesters, one forwarder, and three operators on staff.

Originally, Mikko had simply intended to replace his old Komatsu 901 with the newer model, but changed his mind at the opening of the workshop in Rovaniemi, Finland.

"I tested the new cab on the Komatsu 911 and the larger bogie changed my mind on the spot," he explains.

Mikko can't point to any particular technical factors or other reasons for his choice of machine, other than that as soon as he took delivery of the new 911 he knew he'd made the right decision.

"It's simply the case that if I want a machine like that, I'll buy one," he says.

The cab is important to Mikko, however.

"For me, the cab is the most important part of the machine. At the moment, I'm looking for an operator for this machine as there's still a

shortage of skilled harvester operators. But I'm sure the 911's cab will make my search easier," he says.

SPRING IN THE Torne Valley is marked by floods and the forest floor is often soft and wet, so harvesting can't begin until summer arrives.

Ramik Oy's main client is the Länsi-Pohjan Forest Association. The work often comprises thinning assignments and the best competitive advantage is to do a good job.

"Sometimes, it's more a question of silviculture than harvesting," says Mikko. "This far north, the trees are very small and the ground is soft."

But Mikko and his operators take a rational approach to circumstances, since many forest machine contractors would consider such plots hopeless.

"These are plots with the smallest average sizes, although one advantage is that all the plots are pretty large."

What's more, the Länsi-Pohjan Forest Association has an advantage.

"They're more able than other clients to merge many small plots into a single assignment, resulting in a larger area to be harvested," Mikko explains.

THE TORNE VALLEY border region connects northernmost Sweden and Finland.



From the left: contractor Mikko Majala together with operators Mikko Reijo Pokka and Markus Mäntyranta.

New harvesters take center stage

During the year, the new harvesters have been exhibited on the **Cutting Age Tour** in Sweden, Finland, Germany, and Norway. And they've attracted great interest everywhere they've been. Visitors were treated to machine demonstrations, test drives, and rewarding meetings. Here we present a selection of photos from all the places the harvesters have toured.



GERMANY



SWEDEN





NORWAY



FINLAND



Promising start for new

Just two weeks of working with their brand new **Komatsu 951** and **Komatsu 931** was enough for forest contractors Håkon Slåtten and Knut Slåtten to conclude that the promises of more power, increased production, improved mobility, and reduced fuel consumption were true.

HÅKON AND his son Knut are both independent contractors working with final logging. Their annual harvest is about 1-1.25 million cubic feet (30-35 thousand cubic meters). After visiting the Komatsu Forest AB plant in Umeå, Sweden in the fall of 2014, they both quickly decided to buy new harvesters for delivery in April this year. This made them the first Norwegian owners of harvesters from the new series.

"In Umeå, we were promised several important new features and that the new harvesters would have more powerful Stage IV/Tier 4 Final engines and a unique hydraulic system with three pumps and dual hydraulic circuits," says Knut.

The increased engine power is used for higher hydraulic efficiency with greater oil flow and three pumps.

"They provide varied oil pressures to the wheels as well as the individual harvesting functions without any unnecessary waste in the system," says Håkon.

And the machine keeps its promise. After 25 years as an operator, he's impressed

with how nimble, fast, and easy the new Komatsu 951 is to work with, even at low engine speeds.

"I often work in steep, difficult terrain scattered with large rocks. The machine covers such terrain easily and nimbly. The balanced bogie and large rear wheels face up to the challenge better than ever. And I can operate the crane and the head at the same time without compromise," he explains.

KOMATSU FOREST'S test driver showed Knut how the new 931 can extend and rotate the crane while being moved into position for the next tree.

"After a few weeks of using the machine for final logging, I noticed how easy it is to get into a steady rhythm," says Knut.

Both Knut and his father say that they soon saw a 15-percent reduction in fuel consumption compared to the 941 and the 911.5 that they previously used.

"The crosscutting data doesn't lie. The fuel consumption of both machines is con-



Knut Slåtten is Norway's first owner of the new Komatsu 931, and he's very pleased with all the new features.

siderably lower, in terms of production and time. A 15-percent reduction is probably a viable figure even in the long term," say Knut and Håkon.

BOTH ARE ALSO very pleased with the new cab. Knut emphasizes the advantages of the improved upward and downward visibility in the steep terrain in which he works.



Ove Nygård and Daniel Volden were first in Norway to use the new Komatsu 901.

SWITCHED BRANDS

Forest machine contractor Ove Nygård changed the color of his machine and became the owner of Norway's very first new **Komatsu 901**. His choice of machine soon proved an advantage in more ways than one.

"AFTER TEST DRIVING a Komatsu 931, which has the same technical solutions and the same cab as the 901, I decided

to switch brands. The 901 is my very first Komatsu machine. I counted on seeing improvements, but things went quicker

y harvesters



Håkon Slåtten replaced his Komatsu 941 and now uses Norway's very first Komatsu 951. "I've always chosen the largest harvesters, and this is without a doubt the best," he says.

His father is used to the 941 cab, but says that all-round visibility is improved in the new 951.

"The front windshield of my old 941 had a split pane and the skylight was always covered in ice and snow in the winter. The new curved and higher front windshield ensures good visibility from top to bottom all year round," says Håkon.

than expected and I'm impressed with what my Komatsu 901 can achieve in the forest," says Ove.

The company's three harvesting groups produce about 4.25 million cubic feet (120,000 cubic meters) a year. Most of it through thinning, with the Komatsu 901 as the preferred choice. Daniel Volden is sitting at the controls

of the new machine. He's very pleased that his boss has switched to Komatsu, and points out the good all-round visibility, the cab environment, and the crane's rapid response.

"The new hydraulic system with three pumps and increased oil flow shows what it can do," he says.



FALLING INTO PLACE

When Ståle Reistad decided to replace his five-year-old Komatsu 911.4, he simply wanted the newer model. But he still needed some time behind the controls to get used to all the improvements in the **new 911**.

EVER SINCE 2010, Ståle Reistad has harvested about 700-850 thousand cubic feet (20-24 thousand cubic meters) each year with his 911.4 and a 350 head. Split roughly fifty-fifty between thinning and final logging. With his new 911 with a C93 head, he needed a couple of weeks to break old habits and for all the new functions to fall into place.

"Everything goes much faster now. The speed of the machine is much better, and the engine doesn't labor when the going gets tough. Of course, the new hydraulic system benefits all functions," he says.

Highlights **KOMATSU 901**

BRAND NEW DESIGN
NEW CAB WITH HYDRAULIC DAMPENING
UNIQUE KEYLESS SYSTEM
NEW MEDIA HUB
HYDRAULIC SYSTEM WITH THREE PUMPS

HENDERSON KNOWS

Elliot Henderson of Selkirk in Scottish Borders Region, started in forestry with a small squad of men establishing plantations in the South of Scotland. Thirty five years on and he has now taken delivery of **the first Komatsu 951 harvester in the UK** to continue a 50,000T/year contract across the border in the North of England.

WITH THE WORKFORCE now expanded to between 40 and 50 operatives, the business has grown to encompass the whole range of forestry-related tasks – and quite a few others outside. Plant Hire, Construction and Haulage are some of the other sectors that come under the Elliot Henderson Ltd company banner but Cut-to-length harvesting, however, remains the base load that supports the business.

Forestry Commission England's Spadeadam Forest in Cumbria was where the 951 would start to cut timber. The main constituent species is Sitka spruce (*Picea sitchensis*) established at approximately 2m spacing, with inland Lodgepole pine (*Pinus contorta*) on small areas of the dampest ground. Experience has shown that these crops can rarely stand for more than 40-50 years on the exposed peaty land and clear cutting without thinning has become the norm for all but the most

sheltered compartments. The Komatsu C144 harvesting head was deemed to be the best to cope with the densely packed clean straight stems, and had performed well when a prototype C144 that had undertaken trials on the Spadeadam contract in 2013.

The new machine was to be fitted with bandtracks on the bogie and also tracks on the single wheels. This 951 is fitted with widest option wheels and tyres, the new 750 section rear tyre, a first for the 951, provides welcomed additional floatation in the peaty ground.

This 951 is the latest addition to a fleet of nearly 40 machines, the majority of which are red and Elliot Henderson has been waiting a while for a new red harvester to work alongside the Komatsu 890.3 forwarder currently being operated by his brother Roderick at Spadeadam. This machine replaces a 2009 941.1 with 370.2 head which

was one of a number of 941 in the fleet, in fact Elliot could be regarded as an expert on them, he has owned 10 of the 941 model since he took delivery of his first in 2003. Another recent addition to the fleet was a 931.1, also fitted with the C144. This machine complements his fleet well, the physical size of the base machine gives the option to work in thinning when required and the head is still able to handle the bigger crops. "So far we've been impressed with how the 931.1 has performed, in particular the fuel consumption," said Elliot.

THE EXPERIENCE he has of the 941s he has run gives him confidence that he has made a good investment. The configuration of the crane and the head slewing together, in his view, makes the Komatsu harvester a very durable machine. "Care for that slewing mechanism and lubricate it regularly and your Komatsu harvester will work the



The new machine was to be fitted with bandtracks on the bogie and also tracks on the single wheels.



Henderson Ltd has a Komatsu C144 harvester head to its new Komatsu 951.

WHAT HE GETS



Forestry Commission England's Spadeadam Forest in Cumbria was where the 951 would start to cut timber.

hours,” commented Elliot.

Machine operator Tony Carr, from the market town of Hexham in the neighbouring county of Northumberland, was ready to take the brand new machine along the ridge and down to the cut face to continue harvesting timber. Komatsu technician Sam Story first keyed in the selections to be cut; 1.9m bars, 2.8m chipwood from dry material, 2.2m pulpwood for paperboard manufacture. The best logs (down to 18cm top diameter) were to be cut at 4.9m. Accurate measurement by the harvester head is critical for British sawmills.

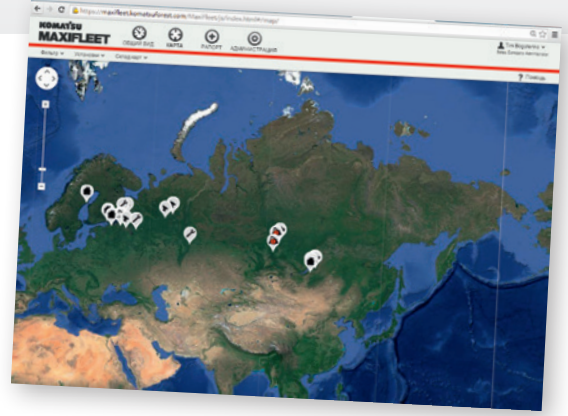
The traditional ‘twelve foot’ log – and Elliot Henderson will have cut many in his time with the chainsaw – will generally go to different buyers in the North of England,

according to straightness. “Can you cut at 3.73m?” the forest manager will say. Tony Carr will be left to sort out the bent from the straight, but the harvester’s measurement system will have got the lengths right.

“
Care for the
machine and
lubricate it regularly
and your Komatsu
harvester will work
the hours.

Down on the cutting site it took only about ten minutes to re-calibrate the system to produce top quality saleable timber and Tony Carr and the Komatsu knew where they were going. The enhanced visibility from both the cab front and back was excellent. The new parallel crane and repositioned position of the computer screen gave him better visual awareness on his right hand side. Slewing, with its direct drive, would be smoother. The three pump hydraulic system would provide him with power to the transmission when he most needed it. He also suspected, from experience with the 931, that his time meeting with the fuel delivery driver and sending the invoice to Elliot Henderson would be cut by a third.

MAXIFLEET with satellite



Russia is a big country, which means great distances to cross. MaxiFleet was tested here for the first time in 2011. Today, almost 100 machines have been connected to the system, which provides remote service and increases safety.

THE MACHINES that have been connected to MaxiFleet are found throughout Russia, from the northwest to Siberia and the eastern side of Lake Baikal. However, due to the vast distances and inaccessible harvesting grounds, forest machines often work in areas that lack GSM networks. Consequently, a

satellite kit is always installed together with MaxiFleet.

"Our machine lineup is comprised of 28 Komatsu machines. As the head of a company with so many machines, I need exact and objective information in order to implement the right measures as regards, for example, logistics, operator

support, and service. So far, we've used MaxiFleet for one logging group comprised of a Komatsu PC200F with a Komatsu S132 and a Komatsu 890.3, but we plan to gradually expand the system to other machines in our fleet," says Maxim Buntov, head of SLDK, a sawmill in the Komi Republic of northwestern Russia.

Maxim also appreciates the ability to receive daily reports directly on his smartphone.

"It's a very practical function that quickly and simply provides me with exactly the information I want," he says.

Komatsu Forest Russia has an extensive network with eleven dealers in Russia and one in Belarus. In total, that means 34 service and spare part centers supporting customers. But even if the service network is extensive, Russia is a large country and MaxiFleet enables customers to receive help faster without needing to travel several hundred miles.

"MaxiFleet enables us to adjust the machine settings and help the operator remotely. The mechanics can connect to and control the MaxiXplorer system over the Internet," explains Jari Alahuhtala, Head of Komatsu Forest Russia.

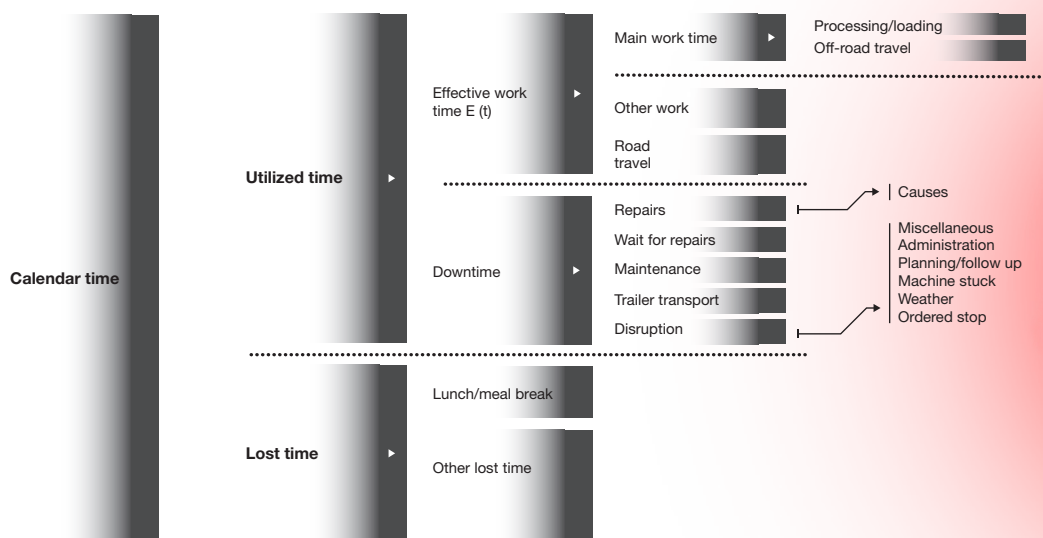
Jari also says that MaxiFleet makes a great contribution to forest safety.

"Each satellite kit is equipped with a telephone that can be used in emergencies in the forest. This is extremely important when you're essentially working alone far from a functioning GSM network," he explains.



▲ Komatsu PC200.

◀ Interest in MaxiFleet is growing rapidly in the immense Russian state. The chance to receive remote support and increase safety are two of the many advantages the system provides.



Making follow-ups effective

The MaxiXplorer control system continually gathers a great deal of interesting information about your machine. **MaxiFleet** provides you with a tool to make the most of the information that is of interest to you. It helps you ensure effective and profitable follow-ups that optimize production and minimize downtime.

MAXIXPLORER is the control system found in most Komatsu machines. The system gathers a great deal of information about the machine as regards its status, operation, and production, as well as alarms and other events.

The smartest way to take advantage of this information is to use the MaxiFleet tool, which offers visual presentations so that you can easily view everything from production reports for entire or partial assignments to machine reports, fuel consumption, and other key data. In principle, you can tailor the information any way you like by retrieving and processing the information you want from MaxiXplorer's extensive database. And since MaxiFleet is web-based, it can be accessed from any computer or smartphone in the world as long as it's connected to the Internet.

One example of useful and valuable

information that MaxiXplorer gathers and that is easily accessible via MaxiFleet is operation reports. With MaxiFleet, you can easily analyze and compare figures visually. Using color codes and charts to present operation reports, you can view in detail what a machine has been used for during a certain period. How much of the total time the machine was used and how much it was unused. Of the time the machine was in use, you can see how much was for production, what was produced, and how the machine was moved between assignments. The time the machine is unused is presented as downtime with detailed information about the cause of the downtime.

Operation reports are easily compared between machines. What's more, you can run comparisons against an anonymous average for similar machines that are also connected to MaxiFleet.

In brief **MAXIFLEET**

MaxiXplorer gathers a great deal of information in four main categories: production, operation, machine status, and alarms and events.

MaxiFleet is the tool that makes it easy to use the information available in MaxiXplorer.

MaxiFleet presents the information visually, making it easier to analyze and compare.

Which information is shown can be individually tailored to each user.

Glen Luce Logging

Pioneers the Komatsu XT430-3

Glen Luce, owner of Glen Luce Logging in Turner, Maine, is pioneering the new Komatsu XT430-3 track feller buncher as his company is the first in the area to use the “next generation” machine.

“

With this new series, Komatsu has completely upgraded to the top of the machine class.



From left: Brandon Webb, operator; Glen Luce, owner; Peter Webb, Anderson Equipment Company.

WHEN HE WAS A SENIOR in high school, Glen, 47, bought his first cable skidder and log truck. After graduating in 1985, he worked on his own for five years and then took time away from logging to work in his father-in-law's excavation business.

The contacts Glen made during his five years in the excavation business paid off and helped shape his second go-around in logging as he started taking requests for land clearing projects, which also led him into chipping.

Over the years, Glen has done highway land clearing jobs in Maine and northern New Hampshire. “Prior to 2009, there was a big demand for that type of work and we kept fairly busy doing that,” he states.

Today, he has five log trucks, a chipper, and two grapple skidders in addition to his new feller buncher. “We still do both select and clear cutting,” he says. “We tend to do more land clearing in the summer and more selective cut logging during the winter months. We’ve been doing more clearing because the housing market is making a comeback in our area. I also buy small pieces of property and perform selective cuts and resell them.”

This past winter Glen needed to replace a track feller buncher so he and his feller buncher operator, Brandon Webb, tested a number of competitive machines.

Glen indicates that “We looked at a lot of options, but Brandon had a preference for Komatsu, which is sold by our local dealer,

Anderson Equipment Company. A key reason for our decision was product support. Anderson Equipment really supports loggers. They’re continuing to grow and support Komatsu in Maine.”

Peter Webb of Anderson Equipment says, “The basic design of the machine has been the industry standard since the beginning. With this new series, Komatsu has completely upgraded to the top of the machine class. It’s one of the best around. Its redesigned cab improves visibility and the interior has excellent fit and finish.

THE CLOSED-LOOP TRACK drive system maximizes the machine’s multifunction capability. Komatsu’s system simply performs better than the competition. It has a triple hydraulic pump system that provides a pump for each track drive and another for the cutting implement. That way an operator can multifunction: cut, lift, swing and travel, without feeling any loss of hydraulic power. The machine also has large rugged final drives that are well proven.”

The new XT-3 series features a sloped roofline for increased headroom above and in front of the seat, and for reduced debris buildup. The operator has a widescreen field of view because of large side windows, a floor-to-ceiling front window and a 60% larger skylight window compared to the previous models. For night operation, the XT430-3 features eleven LED work lights which provide more than double



Glen Luce Logging Inc. New Komatsu XT430-3 while working with logging. The company also has trucks for timber and wood chips, trailers and a chipper.

the brightness compared to halogen. The series has a new IQAN-MD4 programmable digital control system that accommodates individual preference settings for multiple operators. The system also records harvest data, and provides advanced diagnostic reports.

One of the features Brandon really liked about the Komatsu was the three closed-loop pumps, he says, "It makes running a piece of equipment easier on an operator. If you can't get around in the woods, you're wasting time when you could be cutting wood. That's why I feel this machine is a

complete package and makes my job so much easier.

"The new cab is really nice. It's pressurized and feels larger. The windows are tinted, the controls are well-placed and that IQAN-MD4 control and screen are awesome and easy to use. Everything is designed to keep the operator comfortable and productive all day."

Glen expects the new Komatsu to increase the productivity of his overall operation, "With the XT430-3, Brandon can lay down more wood faster for my chipping crew and fell trees to speed up our cut-to-

length processor."

"It absolutely allows me to do more," Brandon said. "The performance of our older machine was holding back my production. It just couldn't keep up with what I wanted and needed it to do. Komatsu feller bunchers have earned a reputation of running cool all day and not overheating. That's another reason it won't slow me down."

Brandon concludes, "Komatsu has made a lot of upgrades to this feller buncher and they really have paid attention to the details."

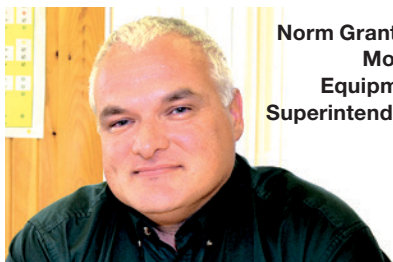
Irving helps contractors purchase equipment

J.D. Irving, Limited (JDI) is one of the leading names in Canadian business. Founded in 1882 and now in its fourth generation of Irving family leadership, the Saint John, New Brunswick, business employs more than 15,000 people and is involved in everything from agriculture to retail, consumer products and shipbuilding.

Peter Griffiths,
Regional
Manager.



Norm Grantley,
Mobile
Equipment
Superintendent.



FROM SEED TO SHELF, JDI represents one of the most integrated, value-added chains in the country. One of JDI's top divisions is Forestry and Forest Products, which starts with Irving Woodlands and ends with numerous mills and a wide variety of lumber and paper products.

Irving Woodlands, which cuts about 5 million tonnes of wood annually, runs the largest private tree-improvement program in Canada. Operating on a combination of Crown land (public), Freehold land (J.D. Irving-owned) and private land. It plants as many as 25 million trees per year and has planted almost 1 billion trees since its tree-planting program started in 1957 – a national record in Canada.

JDI recently started a recruitment program to attract new owners/operators into logging.

"Many longtime loggers are retiring, and we need some new blood in the system," noted Regional Manager Peter Griffiths. "For these young people to go to a bank and say, 'Loan me \$700,000 so I can buy a harvester and go into business,' just wasn't going to happen. So Irving decided to work with them by co-signing loans and teaching them how to be successful contractors. These are guys with the requisite skills who just need a helping hand to go out on their own."

"We're getting some guys in their 20s and 30s, many of whom were operators, and with our support, they're able to start

their own businesses," added Mobile Equipment Superintendent Norm Grantley. "We don't take on just anybody. It's a rigorous selection process that includes testing and background checks. We want to ensure the right skill set, entrepreneurial spirit and commitment to success. Then we give them classroom training, field training and suggest a business plan that, if they follow, will assure success."

IRVING HELPS the individual contractors purchase equipment, but the businesses make the payments. Recently, Irving added seven Komatsu Forest machines (four 901TX.1 wheeled harvesters, one 840TX forwarder and two 895 forwarders) for its contractors.

"We like to partner with good manufacturers and good distributors," said Grantley. "The Komatsu Forest product has a good reputation as a strong, solid machine. We wanted to try them out, and we switched to wheeled harvesters because they're better on fuel. We've had them several months now, and so far, so good. We've had very few issues. It's a good start."

JDI Recruiter Jason Cyr works to find contractors and helps them find operators. "It's a major commitment of time and money for JDI, but it's necessary to ensure the future of our industry. Logging is a great career for the right guys. It's my job to find those right guys."

What follows is a look at some of the



New Brunswick-based Irving Woodlands strictly adheres to sustainable forest-management practices, including large-scale planting and thinning programs.



Jason Cyr (upper left), J.D. Irving, Limited Recruiter.

Owner Daniel Lunn (left) and Operator Mike Simpson use a Komatsu 901TX.1 wheeled harvester to thin a plantation near Saint John. "I like the Komatsu design with the boom on the side," said Lunn. "It's more intuitive for the operator."

"right guys" – the independent contractors who make the JDI program a success.

Daniel Lunn has been contracting to JDI since 1995. His business is based in Grand Bay-Westfield, just outside of Saint John. He has three employees in his commercial thinning company.

LUNN HAS TWO machines and runs them around the clock, five days per week. One of his machines is a new Komatsu 901TX.1 harvester.

Lunn says the right piece of equipment is important for the success of his business, but he says his operators make the biggest difference. "I have two great guys, both of whom have been with me for more than a dozen years.

"Ideally, in the future, I would like to add a third machine, but I don't know how realistic that is. It's all about finding operators. I'd need the same quality of guys as I have now, and they're tough to find. I also still enjoy operating and being 'hands-on' with the business. I'm afraid if I grow too much, I might lose that. So, if there's opportunity to grow, I'll look at it, but if not, I'm good at my current size."

UNLIKE LUNN, who's been in the business almost 20 years, Brad Sears has only been an Irving contractor since May of 2014, when he got his own forwarder and went into business as BMS Operators Incorporated.

Sears currently runs the company with the help of his wife, who takes care of the paperwork, and operator Shannon Critchley.

"We run a Komatsu 895 forwarder – a big, 20-tonne machine. It has lots of power. We're able to haul about 10 cords of wood with it. We're averaging a couple thousand tonnes a week. Some of our hauls might be 1,000 metres, so making one trip with a big machine rather than two with a small one saves time and money. The 895 has been excellent on fuel. I have a 250-litre tank, and we can run two shifts on it," said Sears.

"I've operated forwarders for about seven years now, and the 895 is a great machine," said Critchley. "With a forwarder, you want power, reach and something that handles the wood well. This does all of that, and it's comfortable."

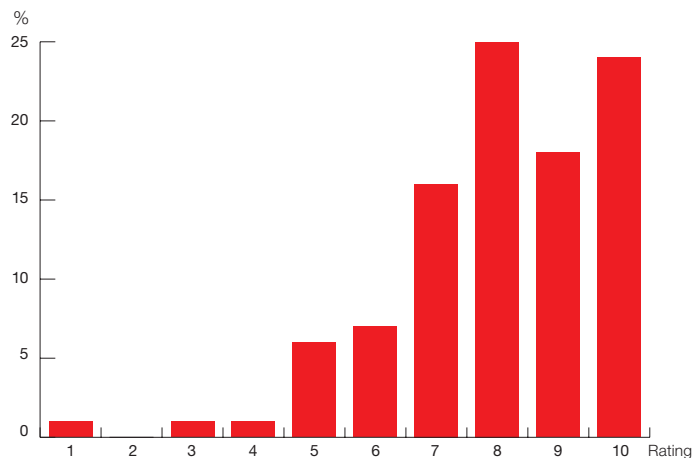
“

... you want power, reach and something that handles the wood well.



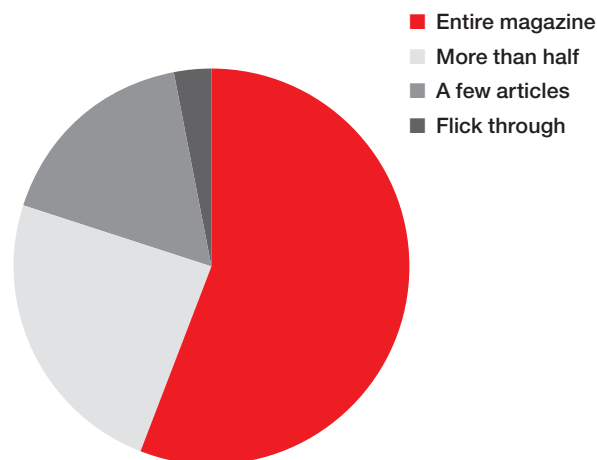
BMS Operators Inc. Owner Brad Sears (left) and Operator Shannon Critchley use a Komatsu 895 forwarder in the Sussex District.

Overall rating



Average: 7.99.

Reader habits



80% read at least half of the magazine and more than 50% read the entire magazine.

High ratings from readers

Our readers appreciate Just Forest. This is shown in a reader survey that we conducted. New products and services, along with technology, are of most interest to readers.

AFTER THE PREVIOUS ISSUE WAS PUBLISHED,

we conducted a web survey to find out what readers really think about Just Forest. All in order to make the content of Just Forest even more interesting to our readers. Those who responded were mostly machine owners, operators, and forest company employees from all around the world.

The survey clearly shows that our readers appreciate Just Forest. The overall rating was 8 on a scale of 1 to 10. The survey also shows that Just Forest is very interesting and easy to read and that the magazine is a good way to keep up to date about Komatsu Forest and its products. It's appealing and provides new insights and knowledge. This rating is also supported by the fact that more than 90 percent of respondents would like to see more issues of Just Forest each year.

The majority still read the printed magazine, but clearly many readers would like to see both printed and digital copies of Just Forest.

THE SURVEY also shows that 80 percent of respondents read at least half of the articles in the magazine, and more than half of respondents read Just Forest from cover to cover.

Even if the survey shows that most of the content is interesting, there is room for improvement. Operators would also like to see photos from readers and more tips and advice. Machine owners would like, for instance, more about the forest industry and local features about customers.

We would like to thank everyone who took part in the survey for their time and input.

Please send your photos, suggestions for features, and any other comments to: info@komatsuforest.com

World-leading partnership

Technology companies Indexator Rotator Systems and Komatsu Forest are a glowing example of a profitable business partnership. For many years, they have joined forces on a number of development projects with the aim of developing forwarders and harvesters that are absolutely world class.

Komatsu Forest's role in the partnership is to provide machine expertise while Indexator contributes with cutting-edge expertise on rotators, slewing dampers, and swivel solutions.

Collaboration between teams of engineers enables the continual creation of custom end-to-end solutions.

The slewing damper and rotator solution used in the ProTec system is one example of the companies' previous joint efforts. The crane nose of Komatsu's new generation of harvesters contains one of the latest innovations, which is a further development of Indexator's MPB brake link that is fitted as standard.

And the collaboration is not limited to the field of development.

The companies also provide joint product and service training courses throughout the world.

Erik Svensson, Head of Sales and Marketing at Indexator, considers combining development and training a major advantage.

"In this way, we can offer the end customer the best possible product and support," he says.



Long-term profitability. Team work between companies provides end customers with products of optimal quality and with the best overall economy.



ProTec in action. The ProTec system with protected hosing routing through the link is one of several examples where Komatsu Forest and Indexator have collaborated on development work.

News, developments, and improvements. Komatsu Forest constantly works with product development and continual improvements. Here are a few snippets of technical news, both large and small.

CONTROLLING THE DIESEL HEATER BY TEXT

A new function that enables you to activate the diesel heater in a harvester by sending a text message, no matter where you are. Other methods include the remote control and setting a timer in MaxiXplorer.

This new function is available on all new harvester models. The system works wherever a GSM network is available.



NEW GUARD FOR CRANE LIGHTING

You can now choose an alternative guard for the crane lighting on forwarders used for thinning. The new guard is available in two versions.

One is a metal guard that can be used with either halogen or LED lamps. The other is a transparent plastic guard that can only be used with LED lighting.

NEW COOLER HOSES

The AC unit heater on all Komatsu forwarders and harvesters with Stage 3B or Stage 4 engines has new cooler hoses. The new hoses replace all hoses that carry water to the cooling and heating system.

These hoses offer better heat resistance, which means a longer service life for the water hoses and the cab heater. The new hoses also reduce pollutants in the coolant.



REFILL PUMP FOR DEF

The much appreciated electric pump for diesel exhaust fluid, or DEF, is now available as an option on all new machines sold in the European and North American markets.

The extensive interest in the pump means that it is now available as a factory-fitted option.

NEW COMPUTER CALIPER

A new computer caliper is now available with a number of new features that make it even easier to use.

The new computer caliper has its display mounted on the moving part, making it easier to read when taking measurements. A pistol grip with a trigger to register measurement values also simplifies the measurement process.

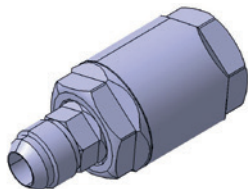
With the new computer caliper, the operator can caliper the diameter with the electronic tape measure anywhere along the stem instead of at fixed intervals.

The display is easily detached and kept in a pocket or worn on an armband. The measurement values are sent wirelessly. The caliper complies with the standard for StanForD 2010.



NEW SWIVEL SIMPLIFIES SERVICE

The swivel connecting the feed roller hoses is now available in a new version that offers faster and easier feed roller hose replacement.



OPTIONAL REMOTE CONTROL

An optional remote control is available for the new harvester models. No key is required to start the machine if you choose the remote control. This unique keyless system controls the machine's heater, main circuit breaker, and lock functions.

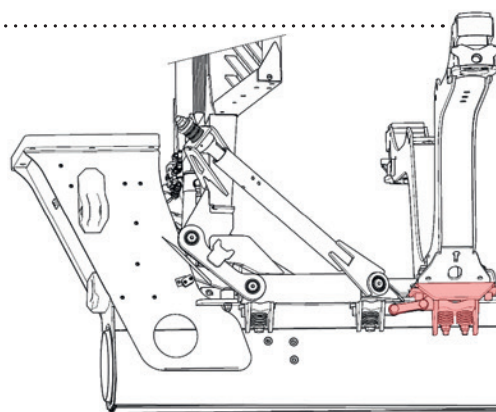
MOVABLE BUNK FOR FLEXGATE

FlexGate now includes an optional movable forward bunk. The movable bunk means that the adjustable gate can be moved even further back, enabling the forwarding of more timber lengths. And this means increased productivity.

The new option comprises a mounting kit that is fitted to the forward

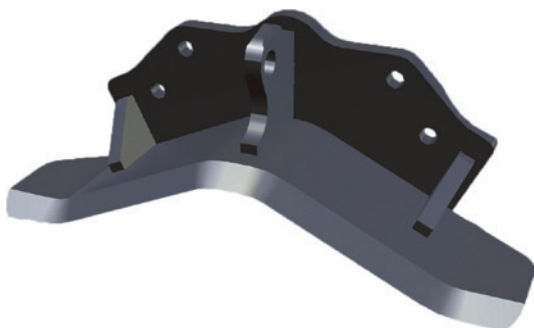
bunk, allowing the bunk to be coupled to the hydraulically adjustable gate. The bunk moves together with the gate when the latter is moved along the frame.

This option is only available on the Komatsu 835 and the Komatsu 845 and is not compatible with earlier models.



NEW VERTICAL KNIFE ON 365.1

A new vertical knife is now available for straight, large-diameter trees. The new vertical knife has no skid tip and as such is suitable for straight, large-diameter stems. The older knife with a skid tip is still available and is suitable for harvesting crooked trees, primarily deciduous.



NEW ROTATOR HOSES

The Komatsu C93 and C144 heads have new rotator hoses that are 2 inches (50 millimeters) shorter than before, enabling them to move around freely in the protective casing.



NEW VERSION OF MAXIEXPLORER

The latest software update to MaxiExplorer 3.3.0 focuses on speed. The startup time has been almost halved and the time taken to switch users has also been reduced.

TIRES FOR HEAVY LOADS

New tires from Trelleborg with a higher load index offer longer service life. Tires sized 710/45-26.5 have a new load index, increased from 163 A8 to 168 A8. The tires are available for the Komatsu 845, the Komatsu 855.1, the Komatsu 911, and the Komatsu 931.



NO TWO TREES THE

Tree properties and appearances vary greatly throughout the world. This is an important basic assumption in modern harvesting head development, which shows a clear trend for more specialized heads with more customization options.

THE WORLD HAS more than ten billion acres (four billion hectares) of forest, albeit very unevenly distributed. The five most heavily forested countries are Russia, Brazil, Canada, the USA, and China, which between them represent more than half of all forestlands.

The most dominant trees in industrial operations are different species of pine, spruce, and deciduous, among the latter mostly eucalyptus. What's more, there are several other deciduous species that are widely found, such as beech, birch, and oak. The different properties of all these species are a major challenge for modern harvesters, which must be able to effectively handle differences in, for example, length, density, bark quality, number of limbs, and crookedness.

These different tree properties are also a starting point when developing new heads, and it's a real challenge to design heads that are effective under all these different

circumstances.

In recent years, Komatsu Forest has launched several new heads and now has the broadest head offering. This is the result of long-term efforts to develop heads that are as specialized as possible to be effective in different types of forest environment. Increasingly specialized customer needs are another reason that heads do not look the same. Instead, they are based on three different principles, with two, three, or four feed rollers.

These three different design principles can be seen in the head designation. A "C" means that the tree is held or "carried" by the feed rollers, which provides good trunk grip, good traction, and high measurement accuracy. An "S" in the head designation means that the tree is "squeezed" by the rollers and held by the knives and crooked trees are handled well. The third design principle is a combination of "C" and "S", where the tree is held by the feed rollers

and delimbing knives together.

Another clear trend in head development is increased flexibility with several alternatives, for both standard models and optional extras. These can include, for example, a choice of feed roller type, different delimbing knife designs, an additional saw unit, saw bars, feed roller motors, multi-tree accumulation, color marking, or stump processing.

This development takes place in consultation with customers throughout the world. Development work is influenced by important experiences and opinions that sales people, technicians, and mechanics gather from customers.

CUSTOMER EXPERIENCES AND IDEAS are also canvassed during the design stage by bringing together designers and customers. And, naturally, prototypes are always tested in their intended forest environments. Everything to ensure effective heads for all types of tree.

A FEW TREE SPECIES USED AS A BASIS FOR DEVELOPMENT WORK.

Recommendations can be considered rough guidelines when choosing a head.



PINE, PINUS SYLVESTRIS, often has a straight stem with no crotches. The crown is thin with a small number of thick branches. Large variation, but considered

medium-hard to delimb. The bark grows thicker and rougher with age. High quality demands strict requirements on measurement accuracy.

RECOMMENDED HEADS:

340 C93 365.1 C144 398



PINE, PINUS RADIATA, often has limbs all the way down to the trunk base. Limbs emanate

from easily distinguishable whorls and are very tough. More difficult to delimb than Sylvestris.

RECOMMENDED HEADS:

C93 C144 398 C202



PINE, PINUS CONTORTA, similar to Sylvestris, but with even more obvious whorls. Difficult to delimb with tough

branches.

RECOMMENDED HEADS:

340 S92 C93 S132 C144 398



SPRUCE, PICEA ABIES, has a straight stem with closely-spaced whorls with branches that are often tough. The lower branches hang

all the way down to the trunk base, obstructing work when felling. Often has a large trunk base swelling.

RECOMMENDED HEADS:

C93 S132 C144 S172 398

SAME



Komatsu 340



Komatsu C93



Komatsu S92



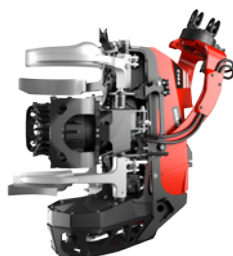
Komatsu 365.1



Komatsu 360.2



Komatsu S132



Komatsu C144



Komatsu S172



Komatsu 370.2



Komatsu C202



Komatsu C202E



Komatsu C283



EUCALYPTUS

There are almost 600 species and they originate from Australia. Grows very rapidly and is often very tall and heavy with branches at the top only. Tough and thick bark with corrosive sap. The timber must most often be debarked during harvesting.

RECOMMENDED HEADS:
370E C202E



BEECH, FAGUS SYLVATICA, has a large-diameter stem with thick

branches and a dense crown. Often has many large crotches.

RECOMMENDED HEADS:
S92 S132 360.2 370.2 398



OAK, QUERCUS ROBUR, is a tall tree with a large-diameter stem, thick

branches, and a broad crown. The bark is thick and rough. Heavy.

RECOMMENDED HEADS:
S92 360.2 S132 370.2



OTHER DECIDUOUS TREES have stems that are almost always crooked with crotches.

Generally difficult to delimb and a challenge for harvesting heads. Represented here by Acacia.

RECOMMENDED HEADS:
S92 S132 S172 C202/E 398

SUCCESSFUL YEAR

During the ten plus years Japan-based Komatsu has owned Komatsu Forest, the company has expanded and is now a successful part of the Komatsu Group. Confirmation of this success was seen when Komatsu Forest recently received the President's Award, the only company among all 54 plants in the Komatsu Group to do so.

Intensive product development, manufacturing with a focus on quality, and close customer relations are a few of the secrets of our success.

"The aim of all of our work is to guarantee profitability for contractors," says Ola Boström, Head of Marketing.

The honor is awarded once a year when the President of the Komatsu Group selects an individual, group, division, subsidiary, or group company that contributes to Komatsu's overall financial result. The award is split into three categories and Komatsu Forest received its accolade in the Excellent Achievement Awards category.



A REAL TOY

The Komatsu 895 is an interesting choice for a LEGO model, according to Mathijs Bongers from Echt in the Netherlands. He's built a 1/25 scale model and has included several functions from the real machine.



THE BEST MECHANICS IN RUSSIA

For the third year running, Komatsu Forest Russia has held a competition to find the best mechanics among all of the company's service centers. The 2015 winner was **Aleksey Klyukin** (Valmet-Amur, LLC – Far East), second place went to **Anton Sarvirov** (FMC Valmet – Komi Republic), and third place went to **Damir Safin** (Sabinski polidrev, LLC – Republic of Tatarstan).

The service and spare part network in Russia is growing. In addition to head quarters in St. Petersburg, which is in western Russia, and the large spare part depots in St. Petersburg and Khabarovsk in eastern Russia, there are another eleven dealers in Russia and one in Belarus, which means a network encompassing 34 service centers.



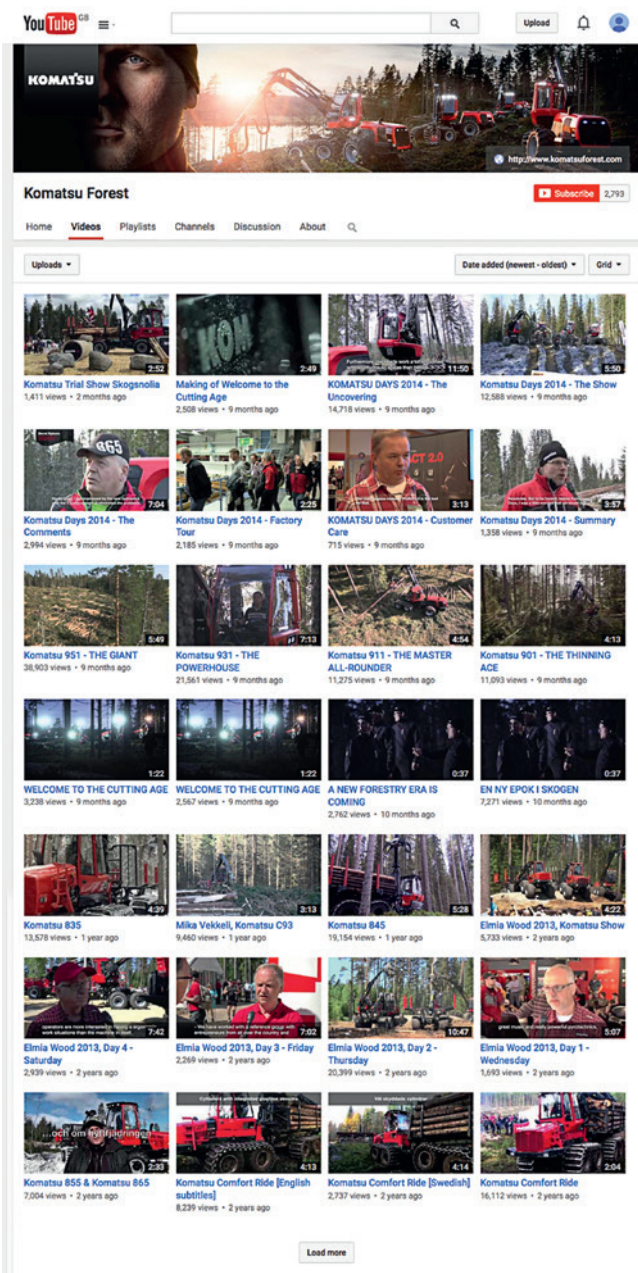
SWEDISH CHAMPION

The Swedish championship in forwarding has taken place in Sweden. The competition machines were two Komatsu 835s, which favored the winner. After a few thrilling rounds, **Martin Svensson** could claim his prize. Martin normally operates a Komatsu 830 for Bröderna Svensson Skog AB, a family-owned business. Martin was congratulated on his victory by Komatsu Forest's Head of Sales Peter Hasselrød.

The competition is arranged by the Swedish Association of Forestry Contractors and was held in conjunction with the Skogsnolia convention outside Umeå.

OUR OWN VIDEO CHANNEL!

View our videos on the Internet or directly on your smartphone. Our YouTube channel has more than one hundred different videos featuring, among other things, machines old and new, customer interviews, and special reports. Scan the QR code with your smartphone, visit **komatsuforest.com**, or find us at **youtube.com/forestryquality**



CONTACT US

DISTRIBUTION CENTERS, SALES CENTERS AND DEALERS

EUROPE

AUSTRIA

Komatsu Forest GmbH
Zweigniederlassung
Österreich
www.komatsuforest.at
Phone: +43 2769 84571

CROATIA

PMT, Poljoopskrba
Medunarodna Trgovina
www.pmt.hr/hr/
Phone: +385 1 2335 166

CZECH REPUBLIC

Arcon Machinery a.s.
www.arcon.cz
Phone: +420 3 2363 7930

DENMARK

Helms TMT Centret AS
www.helmsmt.com
Phone: +45 9928 2930

ESTONIA

Zeigo Service OÜ
www.komatsuforest.ee
Phone: +372 504 4964

FINLAND

Komatsu Forest Oy
www.komatsuforest.fi
Phone: +358 20 770 1300

FRANCE

Komatsu Forest GmbH
South +33 623 07 04 05
North +33 616 11 36 45
West +33 674 33 89 76
Service +33 474 20 18 00

GERMANY

Komatsu Forest GmbH
www.komatsuforest.de
Phone: +49 74549 6020

HUNGARY

Kuhn Kft.
www.kuhn.hu
Phone: +36 128 980 80

LATVIA

SIA Valtek
www.valtek.lv
Phone: +371 2 6444866

LITHUANIA

Lifore Technika Ltd.
www.liforetechnika.lt
Phone: +370 5 260 2059

NETHERLANDS

W. van den Brink
www.lmbbrink.nl
Phone: +31 3184 56 228

NORWAY

Komatsu Forest A/S
www.komatsuforest.no
Phone: +47 62 57 8800

POLAND

Arcon Serwis SP.ZO.O.
www.arconservis.pl
Phone: +48 22 648 08 10

PORTUGAL

Cimertex, S.A.
www.cimertex.pt
Phone: +351 22 091 26 00

ROMANIA

ALSER Forest SRL
www.alsers-forest.com
Phone: +40 744 995450

SLOVAKIA

Agropret-Pulz, a.s.
www.agropretpulz.sk
Phone: +421 949 188 605

SPAIN

Hitraf S.A.
www.hitraf.com
Phone: +34 986 59 29 10

SWEDEN

Komatsu Forest
www.komatsuforest.se
Phone: +46 90 70 93 00

SWITZERLAND

Komatsu Forest GmbH
www.komatsuforest.de
Phone: +49 7454 96020

UKRAINE

Forstmaschinenengesellschaft
Forest Ukraine
Phone: +38 067 342 22 43

UNITED KINGDOM

Komatsu Forest Ltd
www.komatsuforest.com
Phone: +44 1228 792 018

RUSSIA, CIS

Komatsu Forest Russia
www.komatsuforest.ru
Phone: +7 812 44999 07

NORTH AMERICA

UNITED STATES AND CANADA

Komatsu America Corp.
Forest Machine Business
Department
Chattanooga, TN
Phone: +1 423 267 1066

To find your local dealer/sales representative,
www.komatsuforest.us
www.komatsuforest.ca

SOUTH AMERICA

BRAZIL, ARGENTINA,

Komatsu Forest Ltda.
www.komatsuforest.br
Phone: +55 41 2102 2828

CHILE

Komatsu Chile S.A.
www.komatsu.cl
Phone: +56 419 25301

URUGUAY

Roman S.A.
www.roman.com.uy
Phone: +598 233 68865

OCEANIA

AUSTRALIA

Komatsu Forest Pty Ltd
www.komatsuforest.com.au
Phone: +61 2 9647 3600

NEW ZEALAND

Komatsu NZ
www.komatsuforest.com.au
Phone: +64 9 277 8300

OTHER MARKETS

INDONESIA

PT Komatsu Marketing
Support Indonesia
Phone: +62 21 460 4290

PT United Tractor Tbk

www.unitedtractors.com
Phone: +62 21 460 5959

SOUTH AFRICA

Komatsu Southern Africa Ltd
Phone: +27 11 923 1110

PRODUCTION UNITS



Head quarter
Komatsu Forest AB
www.komatsuforest.com
Phone: +46 90 70 93 00

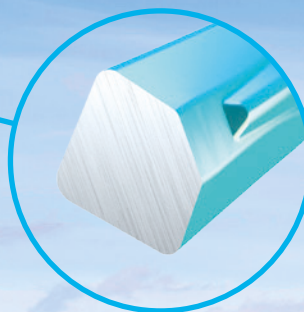


Komatsu America Corp
www.komatsuforest.us
Phone: +1 423 267 1066

ECO-TRACKS™
www.eco-tracks.com

EVO™ →

An all around track providing excellent traction and good flotation. The cross member design is self cleaning and very ground friendly with excellent tire protection and anti-slip properties.



ECO-TRACK™



EVO-M™



MAX™



PRO™

olofsors
Make your own way

► www.olofsors.com